

1. How does this screen work?

The solar panel collects sunlight and converts it into energy to charge the battery. So, you can still use the screen on days that are not as sunny thanks to the energy stored in the battery. Naturally, the solar panel must always be in a place where it can get enough sunlight. The Fixscreen (Minimal) Solar's scope of application, therefore, is also geographically defined based on this and on the prevailing weather conditions.

2. Can the Fixscreen (Minimal) Solar be used in any country?

The Fixscreen (Minimal) Solar is available worldwide, for countries between 52° Northern- and Southernlatitude (between 52° N and 52° S). This scope of application is taken from the Somfy instructions. The Fixscreen (Minimal) can be applied in the 'not possible' zones but always check off with the Solar by Somfy app.

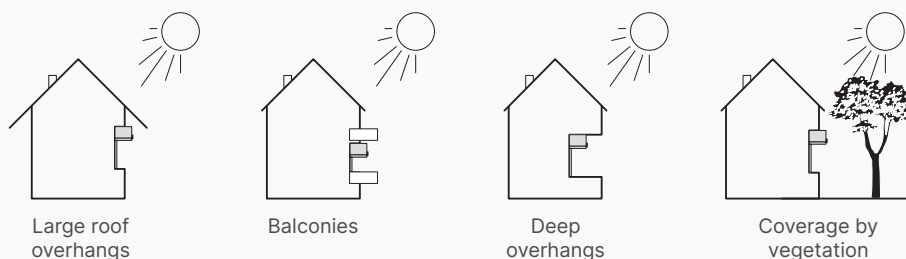
Any use outside of the scope of application as defined by Renson is not in conformity. Because of this and a disregard for the instructions in the manual, any liability and warranty on Renson's behalf become null and void and the proper operation of your Fixscreen 100 Solar cannot be guaranteed.



3. Are there points for attention concerning installation?

Never install the solar panel behind a window or in the shade. The light-sensitive cells must always be accessible by sunlight, so never put anything in front of them. Make sure that the solar panel remains free of snow and that the light-sensitive cells are not blocked by plant growth, overhanging elements, etc.

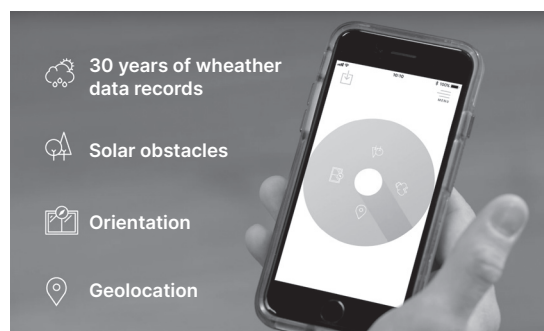
In below mentioned circumstances Renson recommends not to use the Fixscreen (Minimal) Solar. With Fixscreen Solar the solar panel mounted on a separate unit can be used, with cable length of 5 m.



Not sure whether to go for solar-powered Renson® external sun protection screens?



The Somfy Solar app enables you to see which Solar solutions might be suitable, in advance and in a specific environment. The app is available for free in the App Store and via Google Play.



4. Automation: Which controls can be used for the Fixscreen (Minimal) Solar?

	Fixscreen Minimal Solar	Fixscreen Solar
Remote controls	Situo (RTS)	Situo (RTS + io)
Wall-mounted remote controls	Smooove (RTS)	Smooove (RTS + io)
App-controlled	Renson Connect app with 'Solmate' control	

Solmate is a unique controller (not an app) for smart screen control. Learn more about the Solmate control & the Renson Connect app at [Renson, your Solmate for a fresh home | Renson. www.renson.eu/renson-connect](https://www.renson.eu/renson-connect)

5. What is the autonomy of the motor?

I.e. how many days can the motor continue to operate without sunlight, or how many times can this be raised and lowered when the battery is full?

This depends on several peripheral factors, including the size of the screen, the temperature, orientation, the angle at which the sunlight hits the solar cell, etc.

Results R&D testing:

- Testing setup with glass fibre fabric with following dimensions 4m W x 2,7m H with fully loaded battery and covered solar cell. With a full battery, the Fixscreen 100 Solar motor can execute 172 movements or 86 cycles and the Fixscreen Minimal Solar motor can execute 92 movements or 46 cycles.

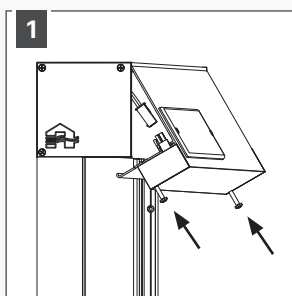
6. How long will the battery last as from the installation?

The battery is fully charged when manufacturing each order and a sticker with the charge date is affixed to the battery. The battery is depleted by 30% after 6 months.

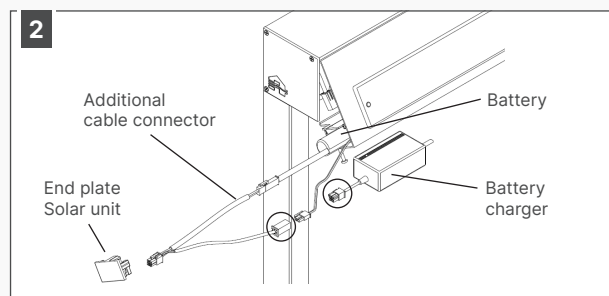
7. What is the adapter for the Oximo battery and how does it work?

This is the battery's charger. Can be ordered via RIO (art.no. 14487 (G6026311)), found under sun protection, accessories.

- **Fixscreen Solar with io motor**



Demount the removable profile from the head box, by unscrewing 2 screws, on both ends of the head box. Detach the connector from the motor cable.

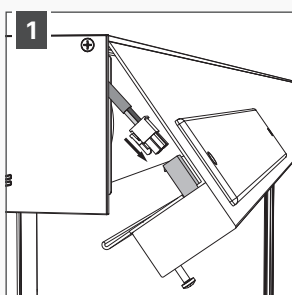


Remove the end plate of the removable profile and slide the battery with cable and connector out of the profile. Connect the connector of the battery to the battery charger using the additional cable connector.

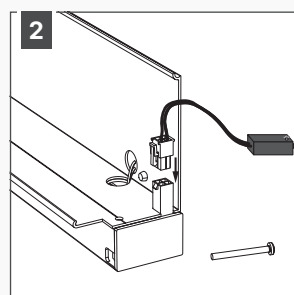
- **Fixscreen Solar with RTS motor**

The battery can be charged in the manner shown below. Therefore, the installer only has to remove the removable profile of the head box and attach the connector to the adapter's connector.

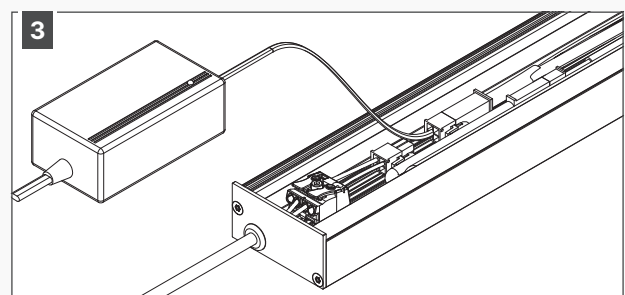
This means that the battery does not have to be removed from the rectangular profile.



Demount the removable profile from the head box, by unscrewing 2 screws, on both ends of the head box. Detach the connector from the motor cable.



Connect the connector in the removable profile of the head box to the battery adapter and fully charge it until the green light is on.

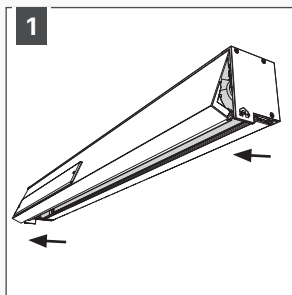


In case of a solar panel mounted on a separate unit, the battery is integrated in the box of the solar panel. The box can be opened by unscrewing the 2 screws on both ends of the box. Connect the connector with the adapter and fully charge it, until the green light is on.

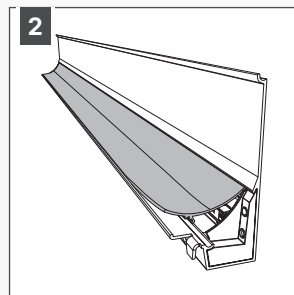
- **Fixscreen Minimal Solar**

The battery can be charged in the manner shown below. Therefore, the installer only has to remove the removable profile of the head box and attach the connector to the adapter's connector.

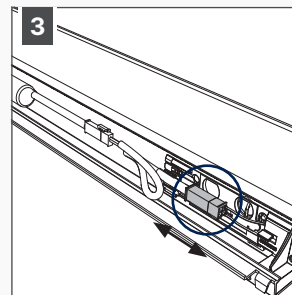
This means that the battery does not have to be removed from the rectangular profile.



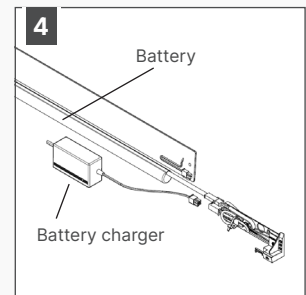
1 Open the head box profile by pulling on the extreme sides.



2 Remove the PVC click profile with a fine screwdriver. The battery and connectors are now accessible.



3 Disconnect the adapter cable from the solar panel cable.

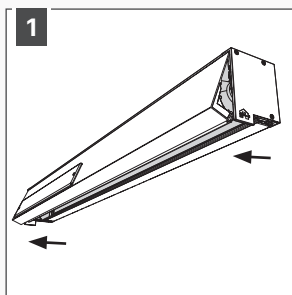


4 Now connect the connectors of the battery and the adapter with each other. Charge it fully until the green light is on.

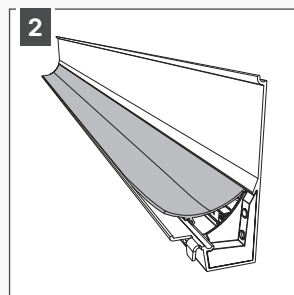
- **Fixscreen Minimal Solar**

The battery can be charged in the manner shown below. Therefore, the installer only has to remove the removable profile of the head box and attach the connector to the adapter's connector.

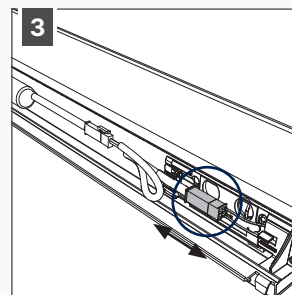
This means that the battery does not have to be removed from the rectangular profile.



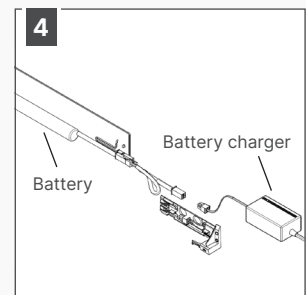
1 Open the head box profile by pulling on the extreme sides.



2 Remove the PVC click profile with a fine screwdriver. The battery and connectors are now accessible.



3 Disconnect the adapter cable from the connector (motor).



4 Now connect the connectors of the battery and the adapter with each other. Charge it fully until the green light is on.

When the screen is delivered, the battery will be fully loaded. If the screen is installed shortly after delivery, the battery doesn't need to be loaded again by means of the adapter.

8. Can the solar panel be installed separately from the screen?

Yes, this is possible for Fixscreen Solar with RTS motor. When ordering, there is a possibility to choose a solar panel mounted on a separate unit. The panel is connected to the box with a cable length standard 5 m. It is also necessary to choose the position of the cable throughput.

For Fixscreen Minimal Solar, this choice is not available to date.

9. How do you program the motor?

You program this motor in the same way you program a Somfy RTS or io motor.

10. How do you replace the motor?

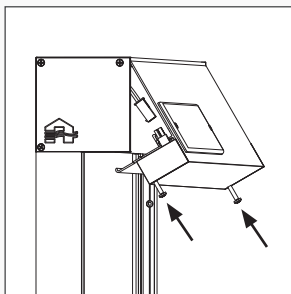
You replace the motor in the same way that you replace it in our standard Fixscreen (Minimal).

- **Fixscreen Solar**

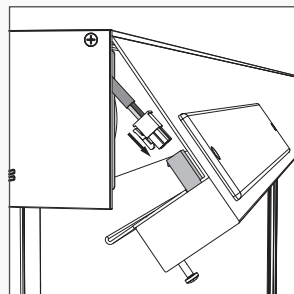
When opening the removable profile of the head box, only the connector must be disconnected from the motor cable.

See the illustrations below.

With io motor



With RTS motor



Demount the removable profile from the head box, by unscrewing 2 screws, on both ends of the head box. Detach the connector from the motor cable.

Note: solar panel mounted on a separate unit

Open the box with fabric tube and motor by unscrewing 2 screw on the bottom of the box.

Cut the cable that is attached to the solar panel. Remove the motor.

Important: the cable that connects the solar panel with the box should always be reachable.

If the cable is integrated in facade in plaster, it is needed to integrate the cable into a cable tray.

- **Fixscreen Minimal Solar**

After opening the removable profile of the head box, the fabric set disassembles easily via the Connect&Go system. The motor is now accessible.

11. Is there a separate training available for the Fixscreen (Minimal) Solar?

The Fixscreen (Minimal) Solar training is integrated into the general Fixscreen training.

12. Which type of motor is used for the Fixscreen (Minimal) Solar?

The Fixscreen (Minimal) Solar is equipped with a radio-controlled Somfy RTS motor: Sunea 40 DC RTS. For Fixscreen Solar, the Somfy radio-controlled io motor is also available.

Power supply	12 V DC (min 11,5 V, max 14 V)
Radio frequency	868 MHz (IO) 433,42 MHz (RTS)
Index protection rating	IP 44
Operating temperature	-10°C / +50°C and exceptionally -20°C / +60°C
Maximum number of connected control points	9 (IO) 12 (RTS)
Maximum number of connected sensors	3
Electrical insulation	Class III

13. The motor does not respond and appears to be defective

As this motor is powered by a battery, the frequency of the signal detection for this motor was halved. The motor scans for signals every 2 seconds. Therefore, it is possible that the screen will not respond immediately when you want to operate it. You simply need to hold down the control for a longer time to make the screen work.